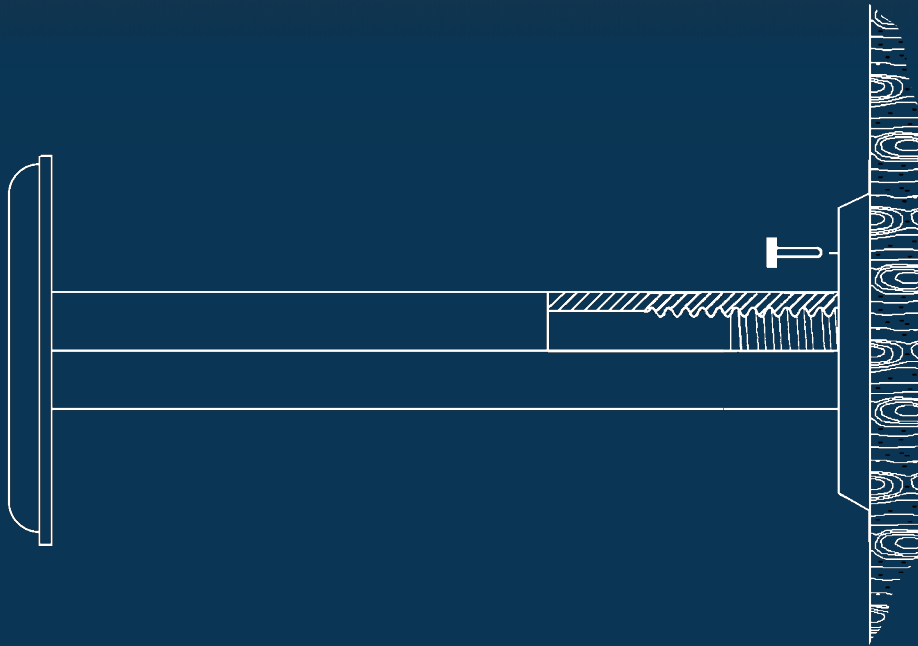


# IMBMS

IRON MAN BAR-COUPLER MECHANICAL SPLICE

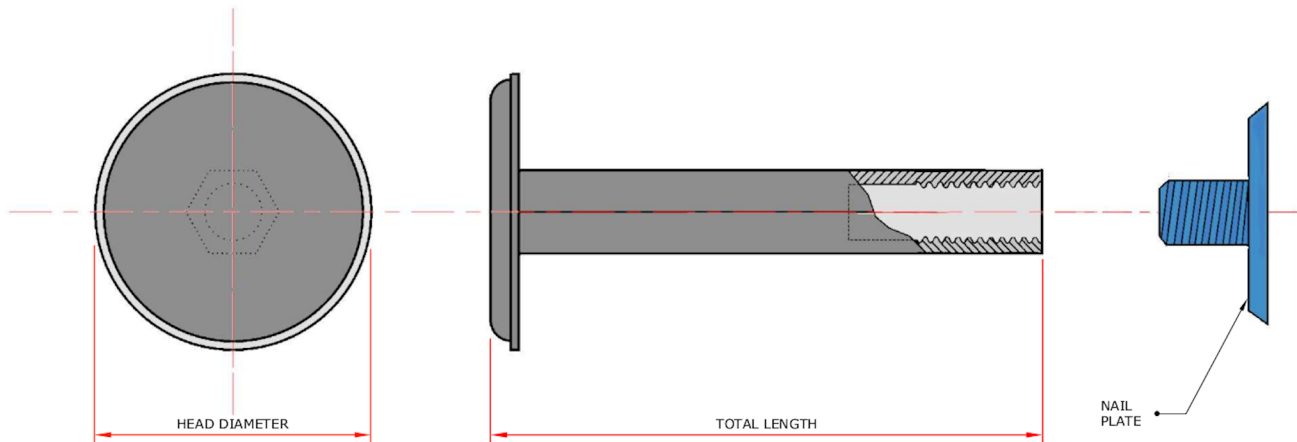
## THREADED INSERTS & NAIL PLATES

PRODUCT RELEASE 2019



# IMBMS STEEL THREADED INSERTS

For 12mm, 16mm & 20mm IMBMS  
Threaded Reinforcing Bar.



All IMBMS Threaded Inserts are fully tested and compliant with NZ standards (NZTA Bridge Manual, NZS3101:2006 (including amendment 3)).

Test reports available upon request.

Bar Diameter	Product Code	Head Diameter (mm)	Total Length (mm)
12mm	12BMS-TI	42	115
16mm	16BMS-TI	55	130
20mm	20BMS-TI	74	150

IMBMS Steel Threaded Inserts are designed in conjunction with IMBMS Nail Plates for use in Precast Concrete construction. The inserts give designers or constructors the ability to eliminate reinforcing starter bars extruding from precast panels after pouring, meaning installers can place reinforcing starter bars on site.

IMBMS Steel Threaded Inserts come in 3 different sizes to accommodate most Precast Concrete requirements.

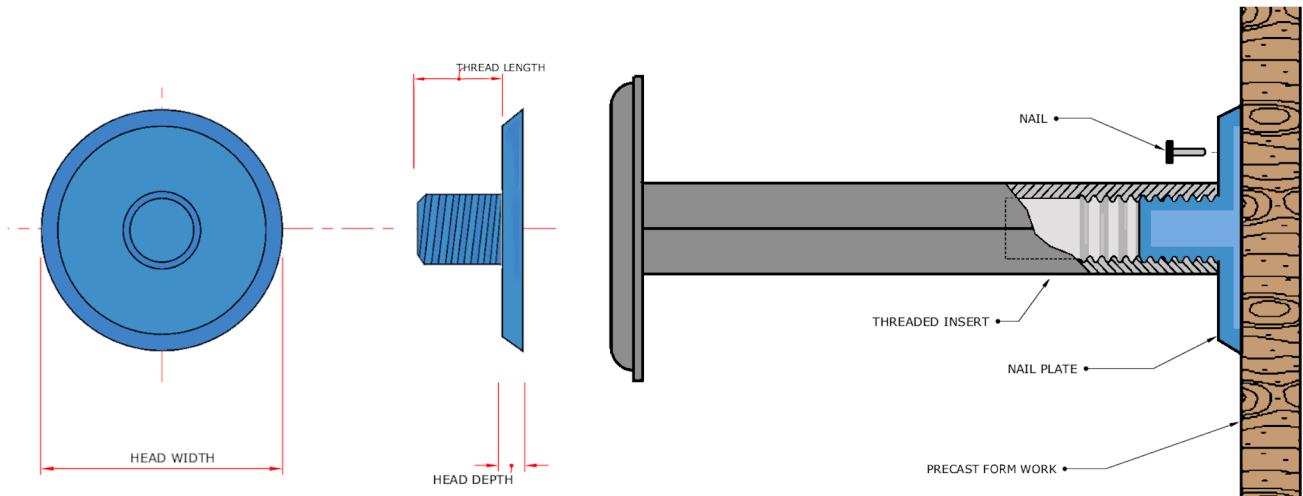
[www.imbms.co.nz](http://www.imbms.co.nz)

[enquiry@imbms.co.nz](mailto:enquiry@imbms.co.nz)

Auckland & Wellington  
P +64 9 277 7771  
PO Box 51286 Pakaranga,  
Auckland 2140

# IMBMS NAIL PLATES

For 12mm, 16mm & 20mm IMBMS Threaded Inserts.



Product Code	Head Diameter (mm)	Head Depth (mm)	Thread Length (mm)
12BMS-NP	55	10	14
16BMS-NP	63	8	12
20BMS-NP	63	8	12

For use in conjunction with IMBMS Threaded Inserts and other associated IMBMS fittings.

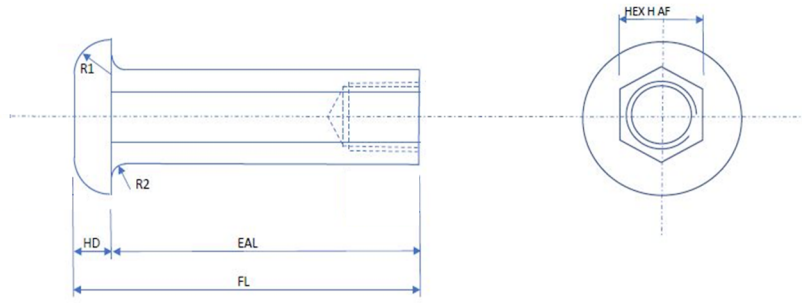
Plastic Nail Plates are easily fixed to Precast formwork.

IMBMS Nail Plates are designed to suit 12mm, 16mm & 20mm IMBMS Steel Threaded inserts for Precast Concrete construction. In conjunction with Threaded Inserts, Nail Plates are an easy and effective way to overcome buildability challenges both in the precast yard and on site. Nail plates are fixed to the inside of precast formwork. Once concrete has been poured and the formwork has been removed, the Nail Plates leave a void for IMBMS threaded bars to be installed.



# TECHNICAL INFORMATION

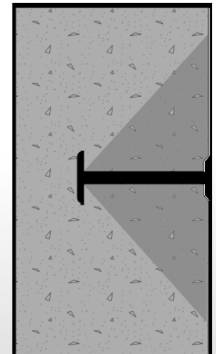
For IMBMS Threaded Inserts



Product Code	Head Depth HD (mm)	R1 (mm)	R2 (mm)	HEX H AF (mm)
PC12TI	6	6	3	19
PC16TI	7	7	3	22
PC20TI	8	8	3	30

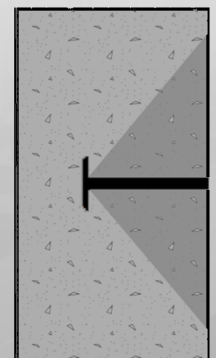
For Threaded Inserts Located With Nail-Plate

Product Code	Rebar Diameter (mm)	Insert Length FL (mm)	Total Embedment Depth EAL (mm)	Individual Characteristic Load Nc,k (kN)
PC12TI	12	115	119	91.8
PC16TI	16	130	133	108.5
PC20TI	20	150	152	132.5



For Threaded Inserts Located Without Nail-Plate

Product Code	Rebar Diameter (mm)	Insert Length FL (mm)	Total Embedment Depth EAL (mm)	Individual Characteristic Load Nc,k (kN)
PC12TI	12	115	109	80.5
PC16TI	16	130	123	96.5
PC20TI	20	150	142	119.7



\*Individual characteristic load values stated above are based off 32mpa non-cracked concrete strength.